

**Timber Shores, LLC**  
 Contact: Alicia Pavelski  
 Phone: 608-403-LAKE (5253)  
 Email: info@timbershoreswi.com  
 Website: www.timbershoreswi.com

TS Lot #: 180  
 Parcel #: 034-02908-0680  
 List Price: \$64,300  
 Acreage: 1.33  
 Waterfront Footage: 457.09ft

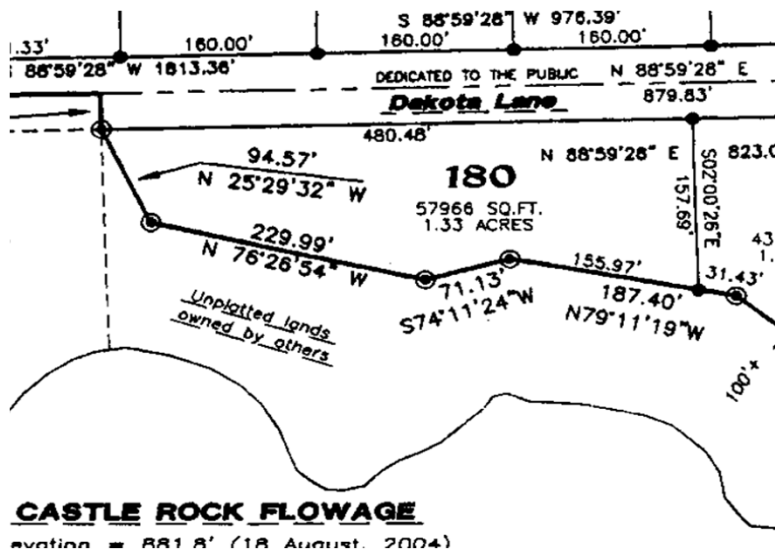
Boat Slip Included/Private Day Pier Access  
 Utilities Available: Municipal Sewer  
 Electric  
 Phone  
 High Speed Internet

**Timber Shores Amenities:**

- 9 Miles of private nature trails connecting to extensive public trails along Castle Rock Lake and the Little Roche-A-Cri Creek
- Private swimming pond and picnic pavillion
- Access to Castle Rock Lake and the Little Roche-A-Cri Creek with private day piers available
- All roads in the neighborhood are part of the Adams County ATV Trail System
- Easy access to snowmobile trails

\*\*Lot photos coming soon\*\*

Lot 180 Plat Map:



Timber Shores Mailing Address: 907 3rd Avenue, Hancock, WI 54943  
 Timber Shores Location Address: 1896 Dakota Jct, Arkdale, WI 54613