

Timber Shores, LLC

Contact: Alicia Pavelski

Phone: 608-403-LAKE (5253)

Email: info@timbershoreswi.com

Website: www.timbershoreswi.com

TS Lot #: 187
 Parcel #: 034-02908-0687
 List Price: \$29,100
 Acreage: 1.01

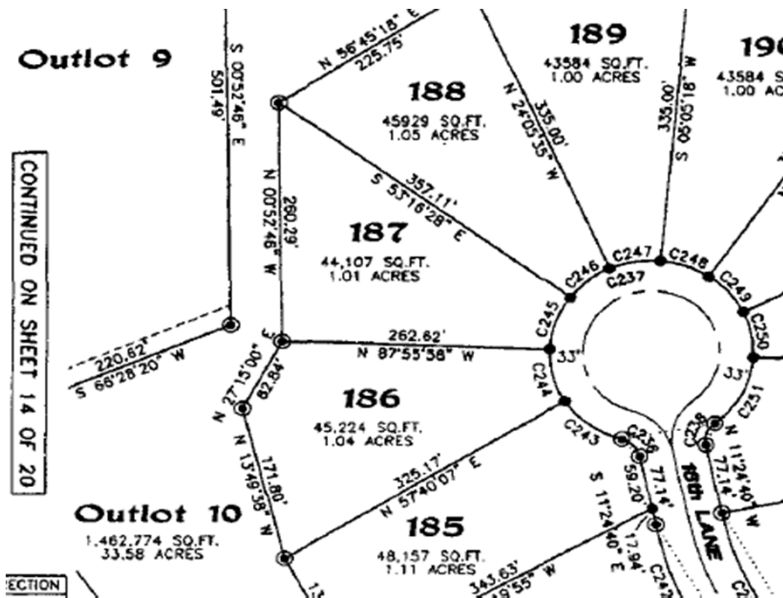
Private Day Pier Access
 Utilities Available: Municipal Sewer
 Electric
 Phone
 High Speed Internet

Timber Shores Amenities:

- 9 Miles of private nature trails connecting to extensive public trails along Castle Rock Lake and the Little Roche-A-Cri Creek
- Private swimming pond and picnic pavillion
- Access to Castle Rock Lake and the Little Roche-A-Cri Creek with private day piers available
- All roads in the neighborhood are part of the Adams County ATV Trail System
- Easy access to snowmobile trails

Lot photos coming soon

Lot 187 Plat Map:



Timber Shores Mailing Address: 907 3rd Avenue, Hancock, WI 54943

Timber Shores Location Address: 1896 Dakota Jct, Arkdale, WI 54613