

**Timber Shores, LLC**

Contact: Alicia Pavelski

Phone: 608-403-LAKE (5253)

Email: info@timbershoreswi.com

Website: www.timbershoreswi.com

TS Lot #: 38  
 Parcel #: 034-02908-0538  
 List Price: \$34,600  
 Acreage: 1.20

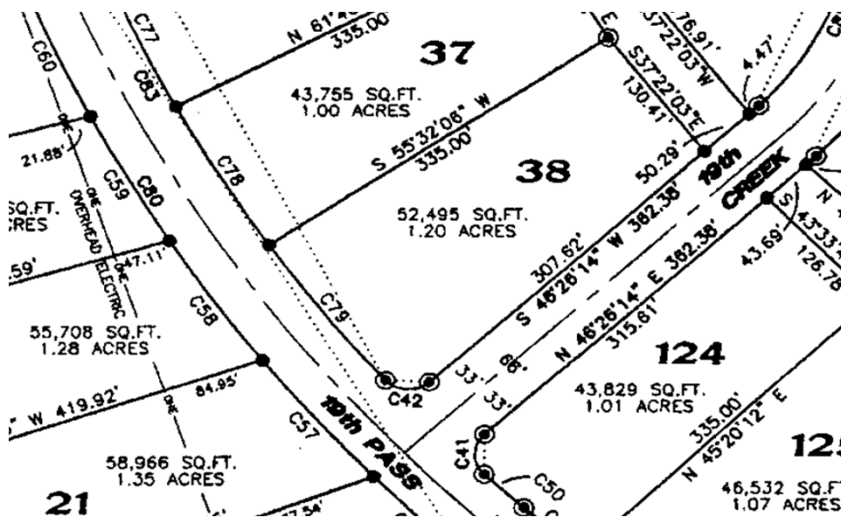
Boat Slip Included/Private Day Pier Access  
 Utilities Available: Municipal Sewer  
 Electric  
 Phone  
 High Speed Internet

**Timber Shores Amenities:**

- 9 Miles of private nature trails connecting to extensive public trails along Castle Rock Lake and the Little Roche-A-Cri Creek
- Private swimming pond and picnic pavillion
- Access to Castle Rock Lake and the Little Roche-A-Cri Creek with private day piers available
- All roads in the neighborhood are part of the Adams County ATV Trail System
- Easy access to snowmobile trails

\*\*Lot photos coming soon\*\*

Lot 38 Plat Map:



Timber Shores Mailing Address: 907 3rd Avenue, Hancock, WI 54943

Timber Shores Location Address: 1896 Dakota Jct, Arkdale, WI 54613